

# PREFAXIS, all precast concrete elements

---

**Kwaliteit en maatwerk  
tot op het hoogste niveau.**

 <sup>®</sup> **prefaxis**  
Prefab solutions.

❖ <b>Abstract</b>	p. 3-12
• Lenne	p. 13
• Naab*	p. 14
• Gironde *	P. 15
• Simmental	p. 1
• Venezia *	p. 17
• Hawaii	p. 18
• Brisbane	p. 19
• MAJ	P. 20
• Corse	P. 21
❖ <b>Stone and masonry</b>	p. 22-25
• Mosel	p. 26
• Drau*	p. 27
• Po	p. 28
• Tennessee	p. 29
• Steinwald *	P. 30
❖ <b>Wood</b>	p. 31-51
• Eder	p. 52
• Inn	p. 53
• Fraser	p. 54
• Somme *	p. 55
• Rustic	p. 56
• Bambus	p. 57
❖ <b>Ribs and waves</b>	p. 58-67
• Fulda *	p. 68
• Rib Type H	P. 69
• Tigris *	p. 70
• Friesland*	P. 71
• Amur	P. 72
• Sinus	P. 73
• Thur	p. 74
• Brussel *	p. 75
• Vosges *	p. 76
• Holledau	p. 77
• Basel	p. 78
❖ <b>Functional</b> *	p. 79-83

\* staal 3x1m op site Prefaxis Zonnebeke

# Abstract



# **ABSTRACT**

## **2/37 Lenne**

**P20.043** Ilot 5 Les Mordacs

25 Avenue du 89 mai 1945, FR-94500 Champigny sur Marne



## **2/42 NAAB**

**P15.009** Boris Vian

Rue de Lannoy, FR-59000 Lille



**P15.103 Viva Lille – Nexity**

Rue de la Plaine / Rue Victor Duruy, FR-59000 Lille



**P17.017 Kantine KSC Mechelen – IBO**

Jubellaan 1, 2800 Mechelen



**P18.034** Duchene Eiffage – Godartville

Place Albert 1 , FR-7160 Chapelle-Lez-Herlaimont

**P21.111** Ehpad Helfaut – ST Omer

Route de Blendecques Helfaut -Rue du docteur SCHULER, FR-62575 St-Omer



**P21.168** Pop Up – Ramery

Rue de l'Alma, FR-59100 Roubaix

**P21.184** Ovesta - ABT – Montreuil

Avenue Faidherbe 7 et 9, 93100 Montreuil (Paris)

**P22.012** Filibert - Donnini – Montreuil

Rue Abélard 16, FR-59000 Lille



**P22.076** Woning Tazelaar – Van Quekelberghe - Eeklo

Lima Verstraethof 35, 9900 Eeklo

**P23.049** Reconversion Desurmont

Rue de Badford, FR-59200 Tourcoing

**P23.129** Avenue Ferber

Avenue Ferber, FR-62250 Marquise

**P24.047** Stade Georges Herbert

25 Rue Raymond Poincaré, FR-51100 Reims

**P24.051** 't Park - Travoo

Rijksweg 336, 8750 Wielsbeke



## 2/151 GIRONDE

**P19.183** Blomet

Rue Lambert 37, FR-75000 Paris

**P20.026** Résidence Aulnoy

Rue des Frères Lumière, FR-59300 Aulnoy lez Valenciennes





**P20.037** Debarcadere

1216 Avenue de la rive, FR-745000 Publier



**P21.112** Prison de Ittre

Rue Clabecq 100, 1460 Ittre

**2/185 SIMMENTAL**

**P13.078** Centre de tri Valor'Aisne

Chemin de la Marnière, FR-02690 Urvillers



## 2/210 VENEZIA

P18.109 Salle de spectacle LA MADELEINE

Rue de Pré Catelan, FR-59110 La Madeleine



## 2/241 HAWAII

**P22.051** Homva – Legendre - Villejuif

Boulevard Macime Gorki 145, FR-94800 Villejuif



**P22.093** Commissariat Aulnoye

Rue Victor Hugo, FR-59620 Aulnoye-Aymeries

## 2/247 BRIBANE

**P21.149** Gymnase Pierre De Coubertin - Bezons

Rue Roger Masson / Rue Parmentier – FR-95870 Bezons

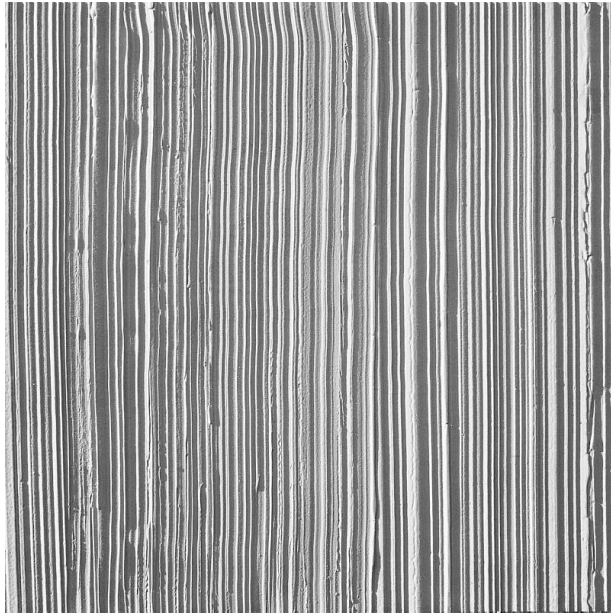


**P24.016** GS BEL-AIR - Vitry

Rue du Bel-Air 24-31, FR-94400 Vitry-Sur-Seine

**P24.050** Commissariat Police Tournais – Tradeco D’Herte

Rue de Becquerelle 24, 7500 Tournai



## 2/37 LENNE

An abstract pattern with a linear texture and a discreet, irregular arrangement. Coarse, varyingly wide grooves as if drawn with a squeegee.

Dimensions in stock:

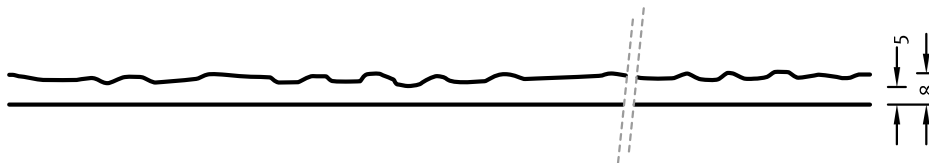
▲ 3600 x ► 3400 2 pieces (C17+C18)

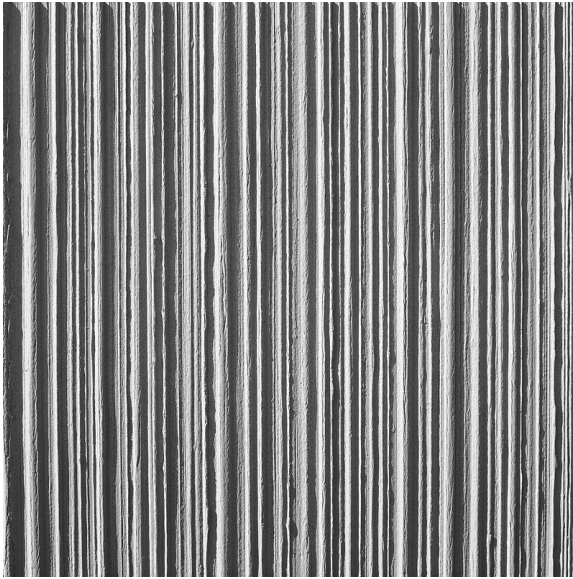
### DIMENSIONS

Uses	Dimensions (mm)	Order Number
100	▲ 3800 × ► 7300	C 2037
50	▲ 3500 × ► 1000	F 2037
10	-	-

100-timer formliners are supplied in an individual dimension within the maximum indicated dimensions.

The specified widths of the 10-timer and 50-timer formliners are a fixed dimension and ensure the continuity of the structure in the case of linear patterns. The longitudinal direction of the pattern is variable and can be ordered from 1 m up to the maximum dimension in 50 cm steps.





## 2/42 NAAB

An abstract pattern with a linear texture. Varyingly wide grooves in an even arrangement only unobtrusively break the concrete.

### Dimensions in stock:

▲ 3210 x ▶9000 1 piece (C33)

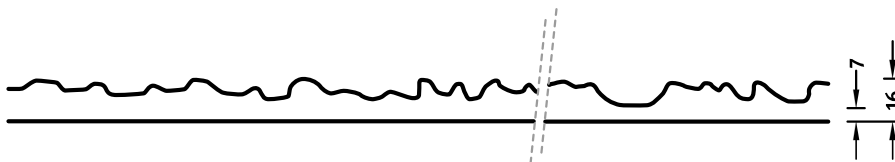
▲ 4390 x ▶3290 1 piece (C34)

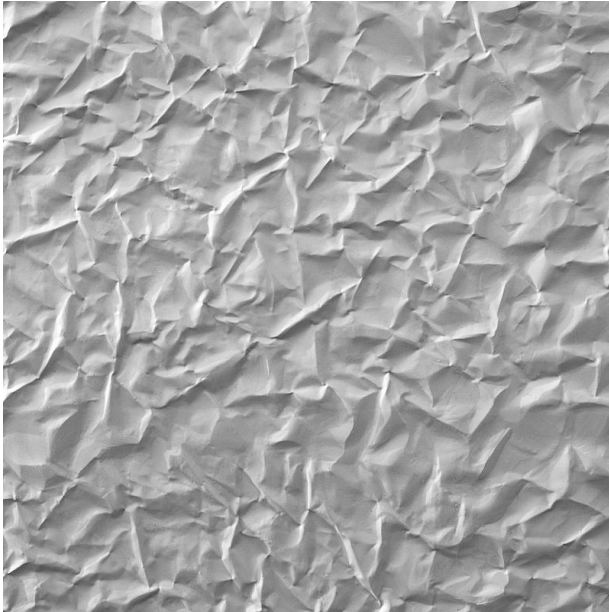
### DIMENSIONS

Uses	Dimensions (mm)	Order Number
100	▲ 7400 × ▶ 3800	C 2042
50	▲ 6000 × ▶ 1000	F 2042
10	▲ 6000 × ▶ 1000	T 2042

100-timer formliners are supplied in an individual dimension within the maximum indicated dimensions.

The specified widths of the 10-timer and 50-timer formliners are a fixed dimension and ensure the continuity of the structure in the case of linear patterns. The longitudinal direction of the pattern is variable and can be ordered from 1 m up to the maximum dimension in 50 cm steps.





## RECKLI 2/151 GIRONDE

An abstract pattern with the texture of wrinkled paper. The surface is smooth.

**Dimensions in stock:**

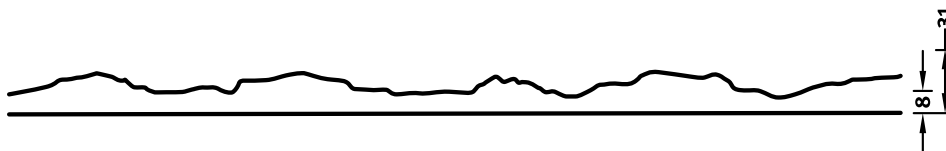
▲10000 x ►3400 1 piece (C12)  
(joint of 2 mats at 295cm height or width)

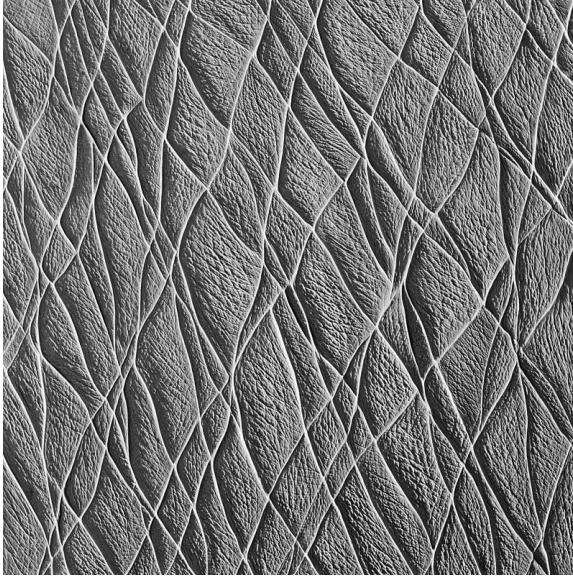
### DIMENSIONS

Uses	Dimensions (mm)	Order Number
100	▲ 10000 x ► 2950	C 2151
50	▲ 6000 x ► 1000	F 2151
10	▲ 6000 x ► 1000	T 2151

100-timer formliners are supplied in an individual dimension within the maximum indicated dimensions.

The specified widths of the 10-timer and 50-timer formliners are a fixed dimension and ensure the continuity of the structure in the case of linear patterns. The longitudinal direction of the pattern is variable and can be ordered from 1 m up to the maximum dimension in 50 cm steps.





## 2/185 SIMMENTAL

The pattern resembles elephant skin: slanted and diagonally running lines form a creased surface.

### Dimensions in stock:

▲3370 x ▶3010	3 pieces
▲3370 x ▶2130	1 piece
▲3370 x ▶2020	1 piece

### DIMENSIONS

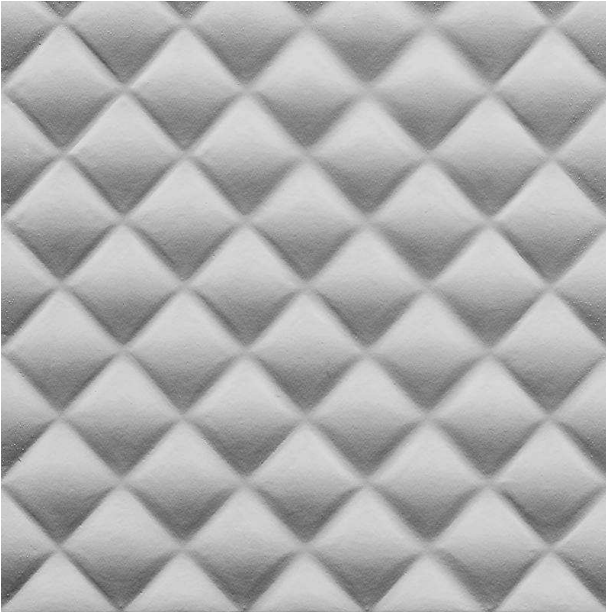
Uses	Dimensions (mm)	Order Number
100	▲ 5950 × ▶ 3400	C 2185
50	▲ 5500 × ▶ 1000	F 2185
10	▲ 5500 × ▶ 1000	T 2185

100-timer formliners are supplied in an individual dimension within the maximum indicated dimensions.

The specified widths of the 10-timer and 50-timer formliners are a fixed dimension and ensure the continuity of the structure in the case of linear patterns. The longitudinal direction of the pattern is variable and can be ordered from 1 m up to the maximum dimension in 50 cm steps.







## RECKLI 2/210 VENEZIA

An abstract pattern with diagonally-running, outwardly bulging squares. They are symmetrically arranged and turned onto their tips.

### Dimensions in stock:

▲ 3400 x ► 10500 1 piece (C10)  
(see detailed plans for joints)

### DIMENSIONS

Series	Uses	Dimensions (mm)	Order Number
C	100	▲ 4080 <sup>flex</sup> x ► 2400 <sup>flex</sup>	C 2210
A	50	-	
E	10	-	

#### flex

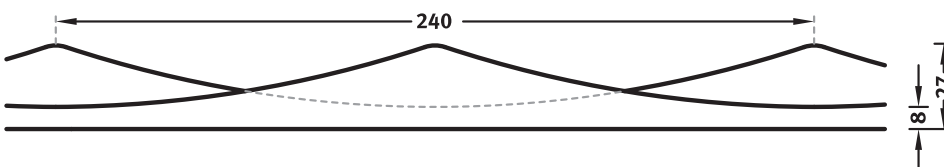
Formliners labeled as Flex specify the maximal dimensions that they are available in. Any dimension below this value can be chosen freely.

#### fix

The formliners labeled as Fix can only be delivered in the specified dimension.

#### uses

We guarantee 100 uses for molds of series C, 50 uses of series A, 10 uses of series E.





## 2/241 HAWAII

A shallow, curtain-like pattern. The pattern appears light and fresh and lends an air of modernity to the façade.

Dimensions in stock:

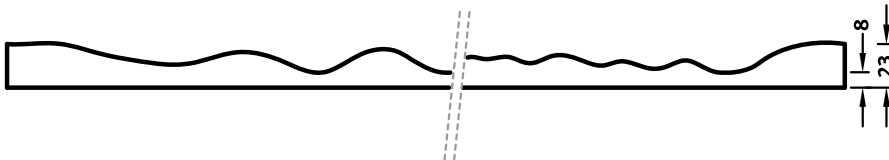
▲3400 x ►8000 1 piece (C39)

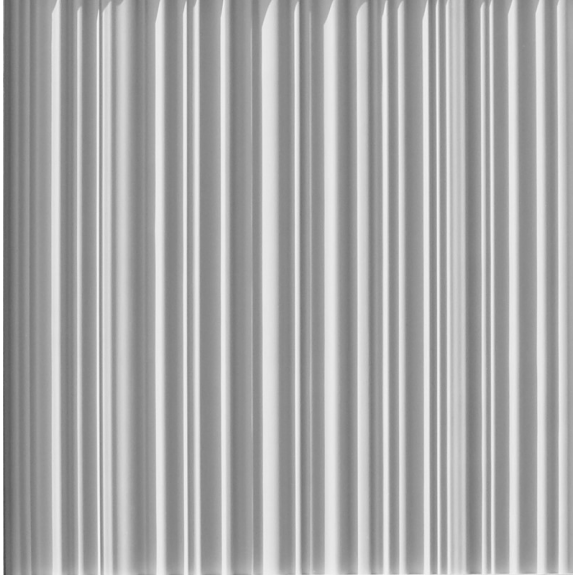
### DIMENSIONS

Uses	Dimensions (mm)	Order Number
100	▲7400 × ►4000	C 2241
50	-	-
10	-	-

100-timer formliners are supplied in an individual dimension within the maximum indicated dimensions.

The specified widths of the 10-timer and 50-timer formliners are a fixed dimension and ensure the continuity of the structure in the case of linear patterns. The longitudinal direction of the pattern is variable and can be ordered from 1 m up to the maximum dimension in 50 cm steps.





## 2/247 BRISBANE

Brisbane is a light curtain pattern with many small folds. Its smooth waves create the even appearance of a curtain.

### Dimensions in stock:

▲ 10300 x ► 3400 1 piece (C35)

▲ 3400 x ► 9102 1 piece (C36)

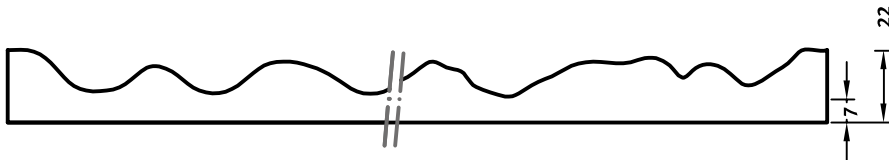
See details for joints

### DIMENSIONS

Uses	Dimensions (mm)	Order Number
100	▲ 6000 x ► 1000	C 2247
50	▲ 6000 x ► 1000	F 2247
10	-	-

100-timer formliners are supplied in an individual dimension within the maximum indicated dimensions.

The specified widths of the 10-timer and 50-timer formliners are a fixed dimension and ensure the continuity of the structure in the case of linear patterns. The longitudinal direction of the pattern is variable and can be ordered from 1 m up to the maximum dimension in 50 cm steps.



A

B

C

D

1

1

2

2

3

3

4

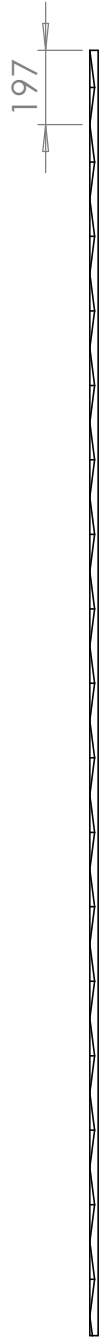
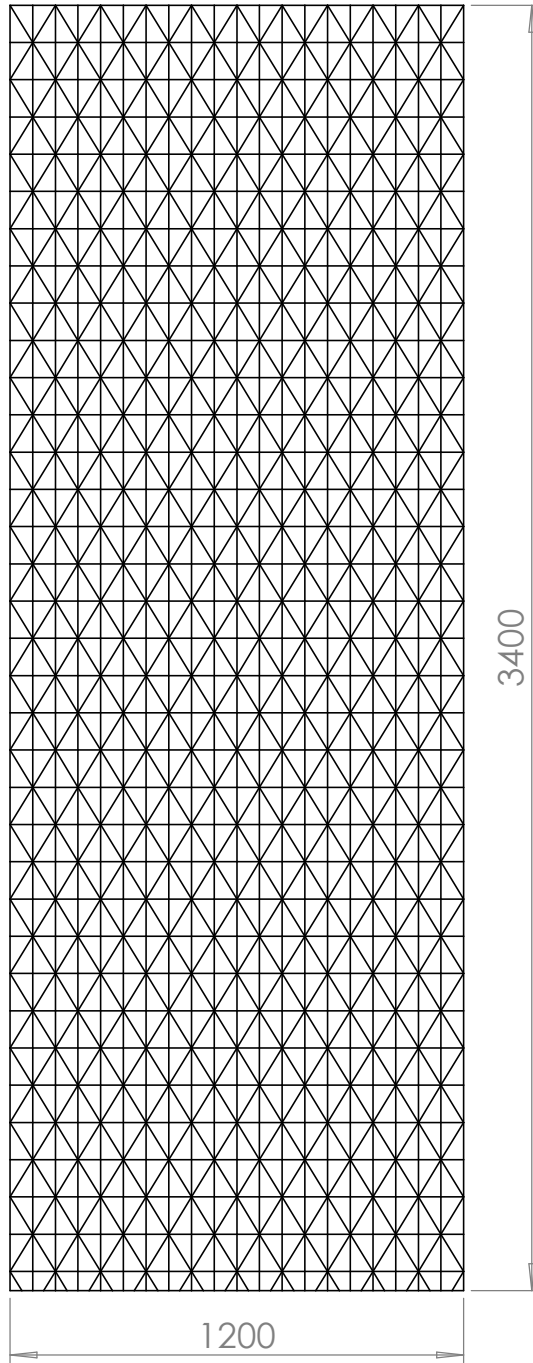
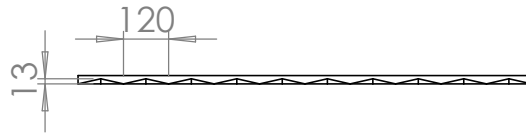
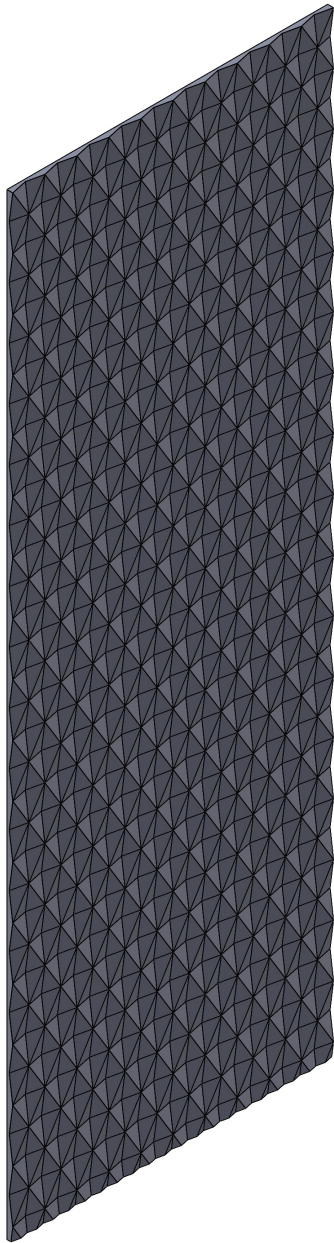
4

5

5

6

6



**RECKLI**®

Oberfläche

smooth

alle Innenecken  
haben immer  
einen Radius von  
min. 3 mm

Bitte nicht bemaßen, Maßstab ist angegeben

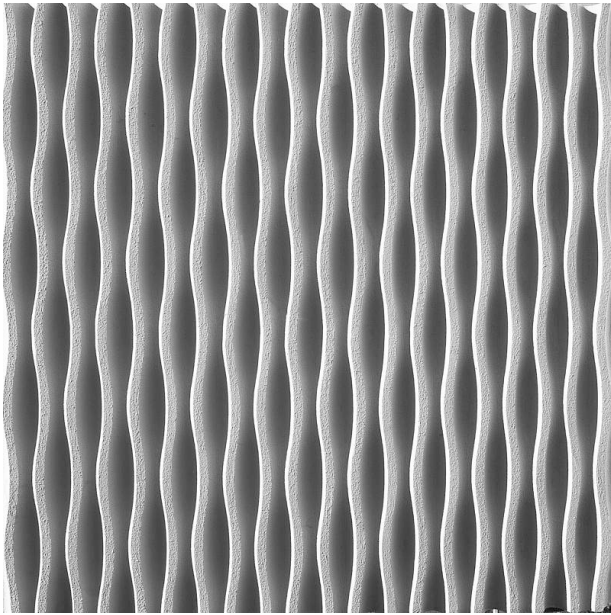
Widervortage

view on concrete

Dimensions in stock:

▲3400 x ►6000

1 Piece (C49)



## 1/43 CORSE

An abstract pattern with a lightly sanded surface. Curved, symmetric lines result in a wave-like texture.

Dimensions in stock:

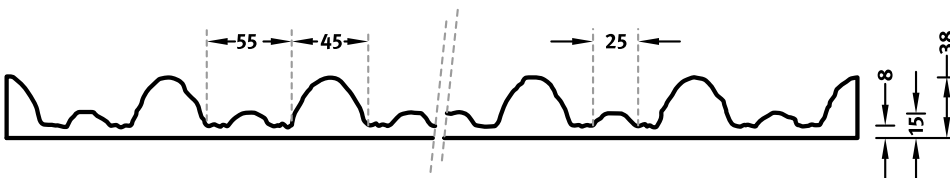
▲3400 x ►9000 1 piece (C52)

### DIMENSIONS

Uses	Dimensions (mm)	Order Number
100	-	-
50	▲ 5000 × ► 1000	F 1043
10	▲ 5000 × ► 1000	T 1043

100-timer formliners are supplied in an individual dimension within the maximum indicated dimensions.

The specified widths of the 10-timer and 50-timer formliners are a fixed dimension and ensure the continuity of the structure in the case of linear patterns. The longitudinal direction of the pattern is variable and can be ordered from 1 m up to the maximum dimension in 10 cm steps.



# Stone and masonry



# STONE AND MASONRY

## 2/41 MOSEL

P14.001 La Luciole - Pole Culturel

Route de Pontoise, FR-95540 Mery-Sur-Oise



## 2/65 DRAU

P16.013 Albatros

Rue de Roncq 125, FR-59200 Tourcoing



**P23.029** RATP St Maur

Rue Politzer 2, FR-94100 Saint-Maur des Fosses

**P24.076** Carport Fluxgo – BOW BOW

Herentalsebaan 209, 2150 Borsbeek



**2/70 PO**

**P12.269** Crèche D'Angers

**2/123 TENNESSEE**

**P12.197** Batiment D'Archives, Chateaulin

**P13.053** Osica Sarcelles

Rue Raoul Dufy, FR-95200 Sarcelles



## 2/156 Steinwald

P22.048 Dinah Derycke

Avenue du Lieutenant Colpin, FR-59491 Villeneuve D'asq





## RECKLI 2/41 MOSEL

A rock pattern with small, flat rock arranged like a gravel bed.

**Dimensions in stock:**

▲ 2100 x ▶ 5180	1 piece
▲ 2100 x ▶ 4150	1 Piece

### DIMENSIONS

Series	Uses	Dimensions (mm)	Order Number
C	100	▲ 3400 <sup>flex</sup> x ▶ 7300 <sup>flex</sup>	C 2041
A	50	▲ 1250 <sup>flex</sup> x ▶ 7300 <sup>flex</sup>	A 2041
E	10	▲ 1250 <sup>flex</sup> x ▶ 7300 <sup>flex</sup>	E 2041

#### flex

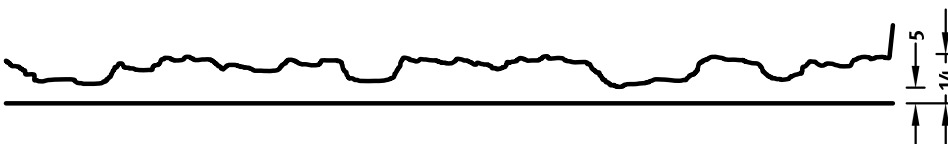
Formliners labeled as Flex specify the maximal dimensions that they are available in. Any dimension below this value can be chosen freely.

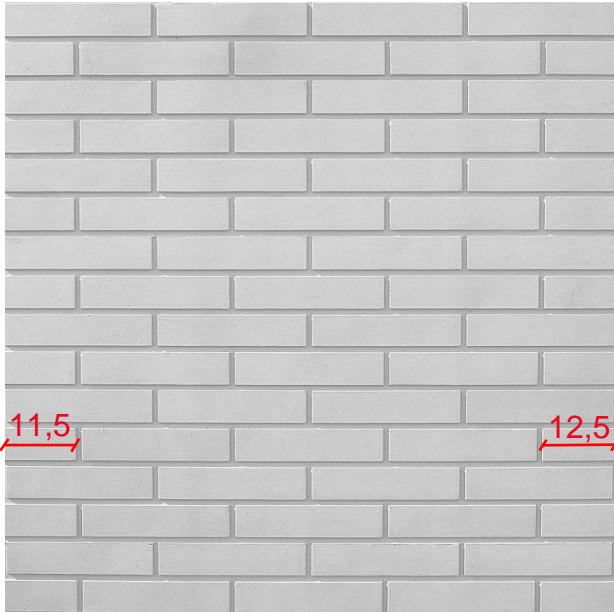
#### fix

The formliners labeled as Fix can only be delivered in the specified dimension.

#### uses

We guarantee 100 uses for molds of series C, 50 uses of series A, 10 uses of series E.

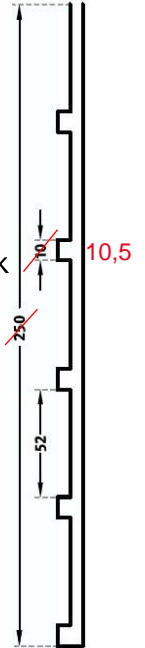




(C47 = 13 volle bakstenen x 93 rijen)  
(C51 = 30 volle bakstenen x 48 rijen)

## RECKLI 2/65 DRAU

A horizontally running brickwork pattern with offset placed rocks in a clinker brick look and smooth surface.

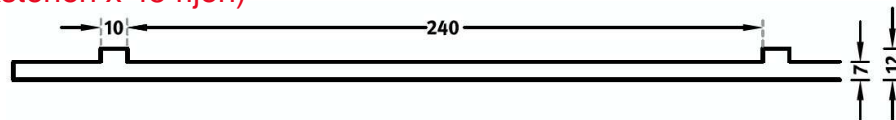


### Dimensions in stock:

- ▲5812 x ►3240      1 piece (C47)
- ▲2989 x ►7490      1 Piece (C51)

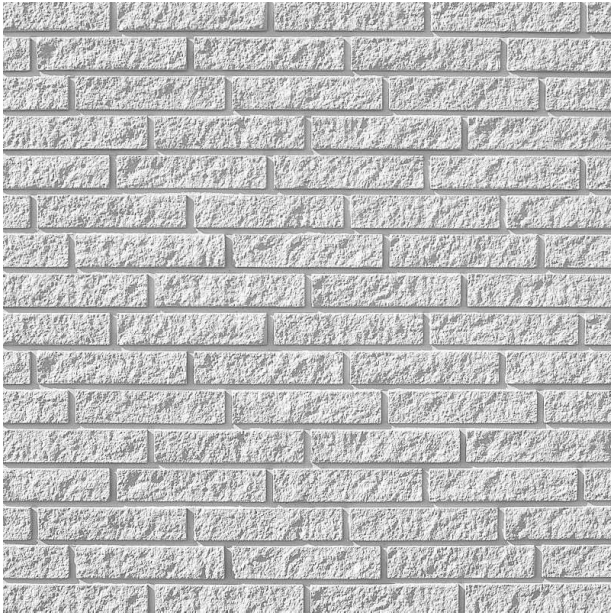
Dimensions have to be checked according to the bricks needed

### DIMENSIONS



Series	Uses	Dimensions (mm)	Order Number
C *	100	▲ 2000 <sup>flex</sup> x ► 3875/4125* <sup>flex</sup>	C 2065
A **	50	▲ 1250 <sup>flex</sup> x ► 3875/4125* <sup>flex</sup>	A 2065
A	50	▲ 2000 <sup>flex</sup> x ► 1250 <sup>flex</sup>	A 2065
E	10	-	-
C ***	100	▲ 2000 <sup>flex</sup> x ► 4125 <sup>flex</sup>	C 2065
A ****	50	▲ 1250 <sup>flex</sup> x ► 4125 <sup>flex</sup>	A 2065

- \* ► toothed out
- \*\* ► toothed out
- \*\*\* ► toothed out
- \*\*\*\* ► toothed out



## RECKLI 2/70 PO

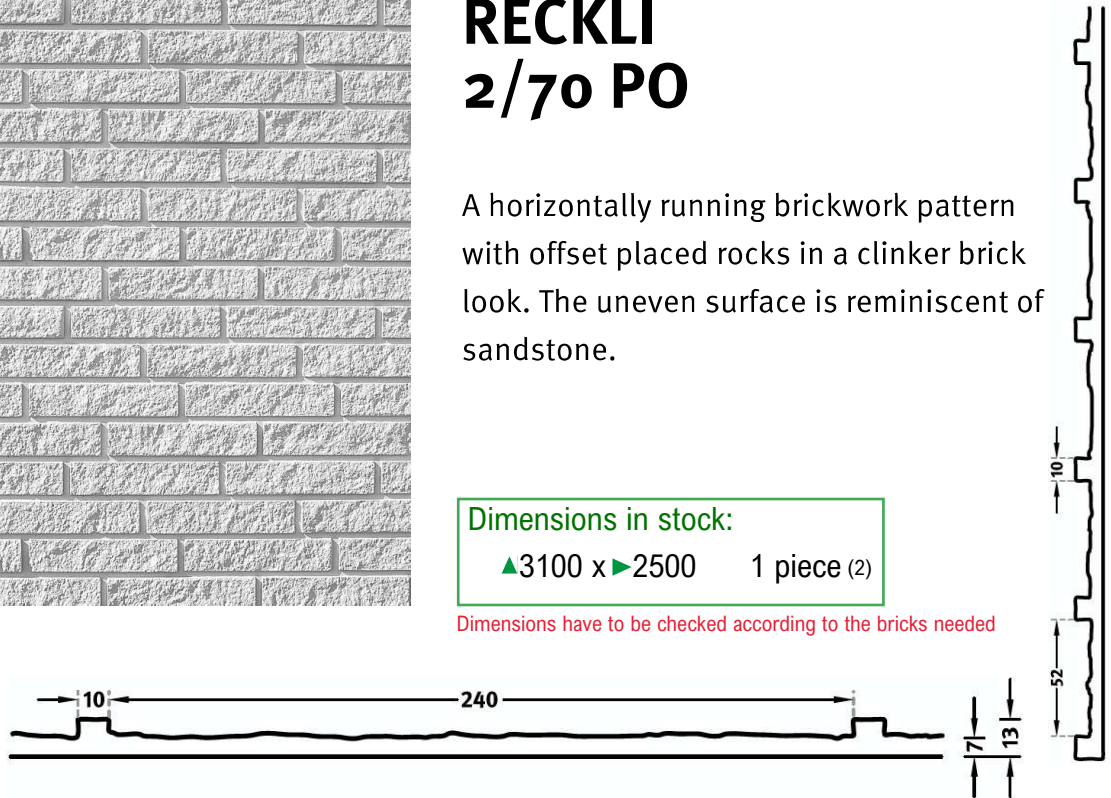
A horizontally running brickwork pattern with offset placed rocks in a clinker brick look. The uneven surface is reminiscent of sandstone.

Dimensions in stock:

▲3100 x ►2500 1 piece (2)

Dimensions have to be checked according to the bricks needed

### DIMENSIONS



Series	Uses	Dimensions (mm)	Order Number
C	100	▲ 4000 <sup>flex</sup> x ► 8020 <sup>flex</sup>	C 2070
A	50	▲ 1250 <sup>flex</sup> x ► 8020 <sup>flex</sup>	A 2070
A	50	▲ 4000 <sup>flex</sup> x ► 1250 <sup>flex</sup>	A 2070
E	10	-	

#### flex

Formliners labeled as Flex specify the maximal dimensions that they are available in. Any dimension below this value can be chosen freely.

#### fix

The formliners labeled as Fix can only be delivered in the specified dimension.

#### uses

We guarantee 100 uses for molds of series C, 50 uses of series A, 10 uses of series E.



## RECKLI 2/123 TENNESSEE

A rock structure with irregularities and break lines. The façade is invigorated, without appearing unsettled.

**Dimensions in stock:**

▲2710 x ►2780 1 piece

### DIMENSIONS

Series	Uses	Dimensions (mm)	Order Number
C	100	▲ 2950 <sup>flex</sup> x ► 2600 <sup>flex</sup>	C 2123
A	50	▲ 2950 <sup>flex</sup> x ► 1250 <sup>flex</sup>	A 2123
E	10	▲ 2950 <sup>flex</sup> x ► 1250 <sup>flex</sup>	E 2123

#### flex

Formliners labeled as Flex specify the maximal dimensions that they are available in. Any dimension below this value can be chosen freely.

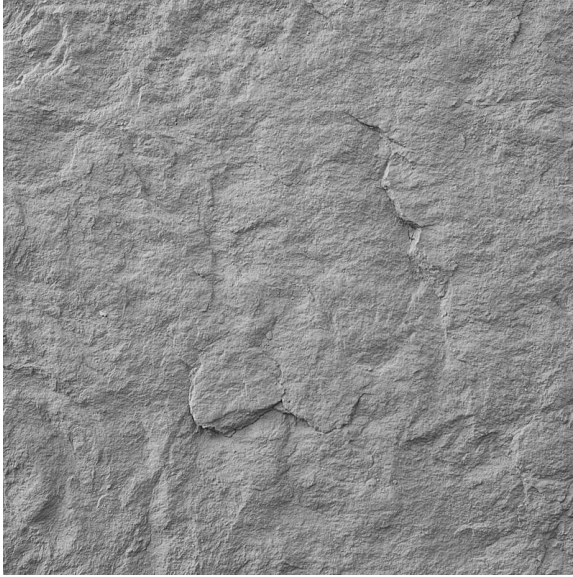
#### fix

The formliners labeled as Fix can only be delivered in the specified dimension.

#### uses

We guarantee 100 uses for molds of series C, 50 uses of series A, 10 uses of series E.





## 2/156 STEINWALD

A rock pattern with natural irregularities and small indentations.

### Dimensions in stock:

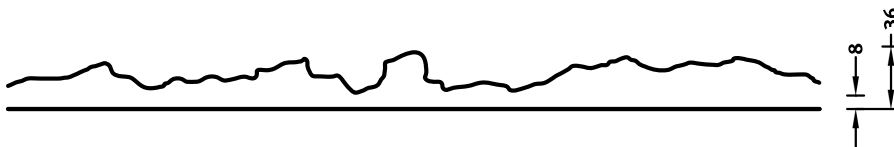
- ▲ 7000 x ▶ 3000    1 piece (C44)  
(joint after 1000mm)
- ▲ 6000 x ▶ 3000    1 piece (C42)
- ▲ 3020 x ▶ 3000    1 piece (C43)  
(C43= 3000mm mat with 20mm joint)  
(C42 and C43 can be coupled together)

### DIMENSIONS

Uses	Dimensions (mm)	Order Number
100	▲ 6000 x ▶ 3000	C 2156
50	▲ 6000 x ▶ 3000 (3 x 1000)	F 2156
10	▲ 6000 x ▶ 3000 (3 x 1000)	T 2156

100-timer formliners are supplied in an individual dimension within the maximum indicated dimensions.

The specified widths of the 10-timer and 50-timer formliners are a fixed dimension and ensure the continuity of the structure in the case of linear patterns. The longitudinal direction of the pattern is variable and can be ordered from 1 m up to the maximum dimension in 50 cm steps.



# Wood



# WOOD

## 2/25 EDER

**P16.002** Witte molenpark – Vandenbussche

Wittemolenstraat, 8200 Brugge



**P17.048** Demonie – Claeys

Westrozebekestraat 85, 8840 Oostnieuwkerke





**P17.212** Bouwteam Wille – Dendermonde

Volaardestraat 99, 9200 Dendermonde



**P19.045** Sint-Lodewijkscollege – Loppem

Magdalenastraat 30, 8200 Brugge



**P21.020** Bondoufle

Rue Madeleine Perrinot, FR-91070 Bondoufle



**P22.047** Woning Koolskamp – APK Construct

Klaverstraat 8, 8851 Koolskamp



**P22.087** Woning R – Concrete House

Ooievaarsdreef 1,2900 Schoten

**P24.022** Drafab – Alheembouw

Beneluxlaan 7, 8970 Poperinge

**2/32 INN**

**P15.181** CPI Hersin Coupigny

Rue Jules Ferry, Hersin Coupigny



**P16.097** Ecole Elementaire

Rue de Moscou (47), FR-59400 Cambrai

**P16.129** Quai 17

17 Quai des mines, FR-59300 Valenciennes



**P20.068** Moulin L'Epine

Rue Sadi Carnot 130 , FR-93170 Bagnolet



**P21.013** Rue De Tocqueville - Paris

Angle rue de saussure/boulevard berthier, FR-75017 Paris

**P21.085** Zac Aragon – Legendre - Villejuif

Boulevard Maxime Gorji 145, FR-9480 Villejuif



**P22.019** Leon Gambetta – Loos

Place Thiers et rue Léon Gambetta, FR-59120 Loos

**P22.038** Kleber - Montreuil

Rue Kleber 66, FR-93100 Montreuil



## **2/163 FRASER**

**P16.098** Pompgemaal Zwindijk – Artes Depret

Kavel 1 straat, 8300 Knokke



**P22.135** Horizons – Grande Synthe

Rue charles Fouriers, FR-59760 Grande Synthe

**P23.059** Corpuss projectbouw

Paradijsstraat 118-134, 8930 Rekkem

**P23.144** Trial Center

Lieu-Dit "Langacker", FR-67710 Wangenbourg Engenthal

**P23.158** Kelder - Maenhout

Moerkerkse Steenweg 169, 8310 Brugge

**P24.048** Woning B – BOW BOW

Adriaan Walckiersdreed 3, 9031 Drongen

## 2/168 SOMME

**P14.032** Oetstattus – Demeulenaere Marc

Sint-Rochusstraat 10, 8800 Rumbeke

**P14.038** Kantoorgebouw Comma – Himpe

Torhoutsesteenweg 413, 8210 Zedelgem



**P14.047** Nieuwbouw archiefruimte – Verhaege

Kerkstraat 1, 8720 Dentergem



**P14.124** Woning – restaurant – Eribo

Kortrijkseweg 164, 8791 Beveren-Leie



**P16.189** Zoo Antwerpen – Concrete House

Ommeganckstraat, 2000 Antwerpen



**P18.068** Scoutslokalen – Kestelyn Devos

Walleken, 9470 Denderleeuw



**P18.099** Woning DVS – Concrete House

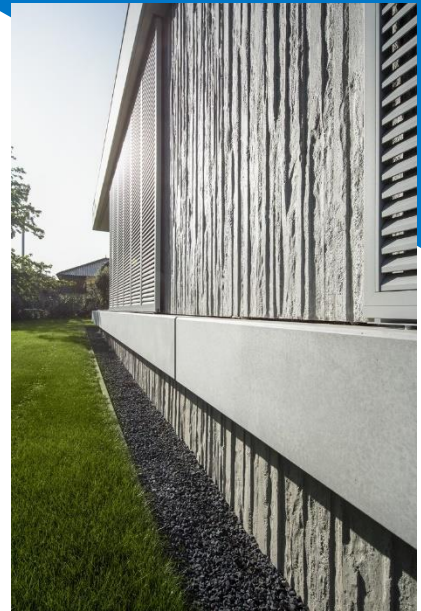
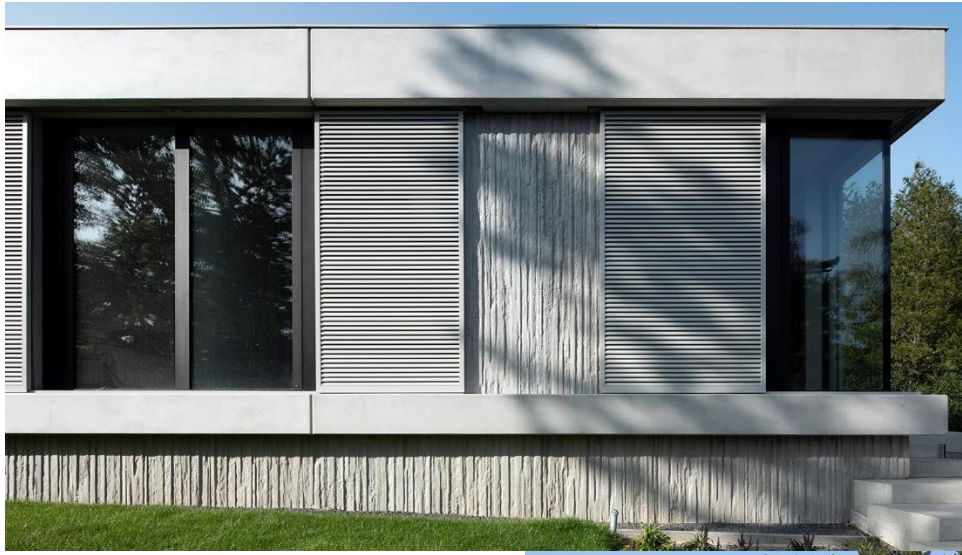
Zwaluwweg 63, 3140 Keerbergen





**P18.100** Woning C – Concrete House

Onderste Molenweg 88, 5912 Venlo (NL)



**P18.173** Kantoor Vercruyse – Vanden Bussche

Ieperse Steenweg 16, 8630 Veurne



**P19.081** Pharmacie du Roc – SOGECO – Tournai

Rue du canon 21, 7536 Vaulx



**P19.109** Go Campus – Alheembouw – Zottegem

Meerlaan 25, 9620 Zottegem



**P19.134 Villa Ham – Concrete House**

Vijverstraat, 3945 Ham



**P20.107 Woning Rumbeke - Eribo**

Hovenierstraat 7, 8800 Rumbeke



**P20.109** Woning BOW BOW

Izegemstraat 48, 8880 Sint-Eloois-Winkel



**P20.160** Gedan

Dorpstraat - Zwanestraat, 8460 Oudenbrug



**P20.188** Woning MS – Concrete House

Ossebergstraat 20, 3690 Zutendaal



**P21.003** Van Quekelberghe

Textielstraat, 9900 Eeklo



**P21.025** Woning SM – Concrete House

Langestraat lot 4a, 3290 Diest

**P21.088** Woning NVDV – Concrete House

Moorstraat 5, 2520 Broechem

**P21.105** Dorpshuis-Ouwegem – Van Maercke NV

Ouwegemstraat 18, 9750 Ouwegem



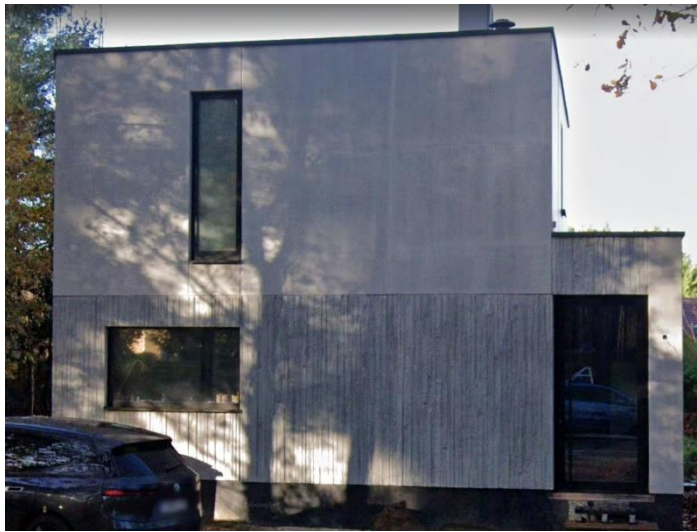
**P21.114** NMBS Halle – Antwerpse bouwwerken

Parking Nederhem, 1500 Halle



**P21.171** Woning G – Concrete House

Averboodse baan 82 - lot 3, 2430 Laakdal



**P22.085** Woning AMA – Concrete House

Vaartdijk 1C, 3191 Schiplaken



**P22.086** Woning BC – Concrete House

Panoramastraat 17, 3600 Genk





**P22.125 Nagels – BOW BOW**

Nagelstraat 29, 8700 Tielt



**( P22.139 Arresthuis – Jan De Nul )**

.....

**P22.143 Woning VS – Concrete House**

Tongersesteenweg Lot 4-4A, 3720 Kortesseem



**P23.050 Bureaux Omega**

Rue de l'usine, FR-57360 Amnéville

**P23.079 Woning GH – Concrete House**

Dorre eikstraat 44, 2550 Kontich

**P23.141 Woning VM – Bow Bow**

Sint-Jansvliet 5, 8420 De Haan



## 1/317 RUSTIC

P14.068 Boschmans – Cosimco

Simon de Heuvellaan, 2110 Wijnegem



## 560800 BAMBUS

P11.502 Mariahuis – Strabag

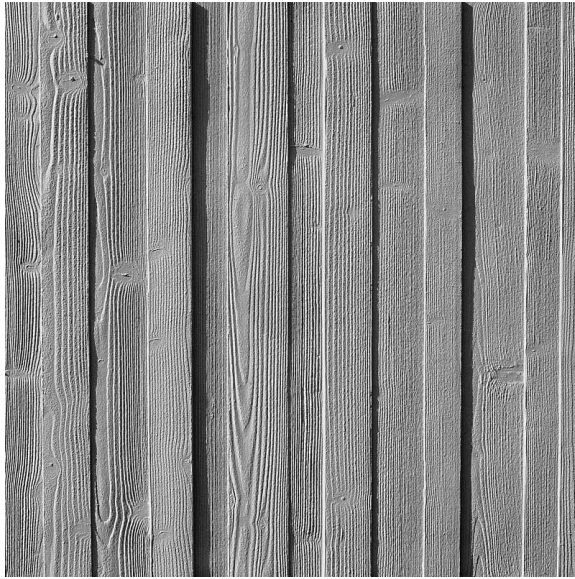
Kloosterstraat 6 (onderstraat 64), 9890 Gavere



P20.133 Parking La Louvière - Lixon

Place des fours à Bouteilles (Bd des Droits de l'Homme), 7100 La Louvière





## 2/25 EDER

A vertically running wood pattern with irregularly wide, adjacently rowed boards. The smooth surface creates the look of a wooden wall.

### Dimensions in stock:

▲4345 x ►3360 1 piece (C3)

▲4350 x ►3360 1 piece (C41)

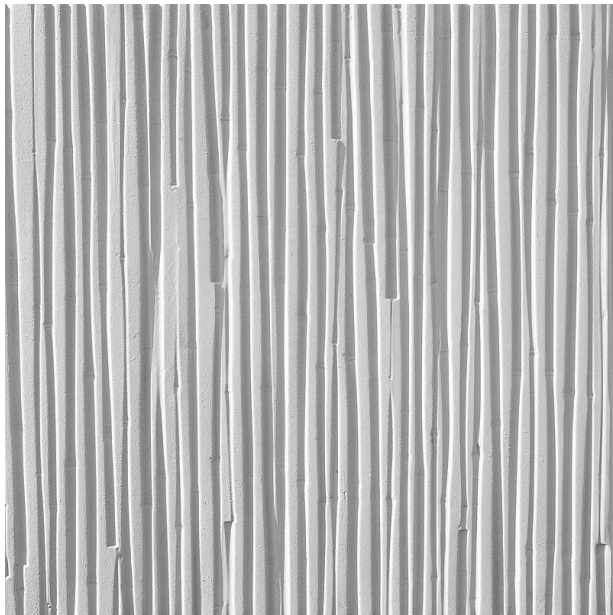
### DIMENSIONS

Uses	Dimensions (mm)	Order Number
100	▲ 5800 × ► 3800	C 2025
50	▲ 5500 × ► 1000	F 2025
10	-	-

100-timer formliners are supplied in an individual dimension within the maximum indicated dimensions.

The specified widths of the 10-timer and 50-timer formliners are a fixed dimension and ensure the continuity of the structure in the case of linear patterns. The longitudinal direction of the pattern is variable and can be ordered from 1 m up to the maximum dimension in 50 cm steps.





## RECKLI 2/32 INN

A vertically running wood pattern. Varyingly long and wide branches touch each other and partly merge. The surface appears smoothly planed.

### Dimensions in stock:

▲3390 x ▶7600	1 piece (C20)
▲3400 x ▶7000	1 piece (C19)
▲7200 x ▶3210	1 piece (C40)

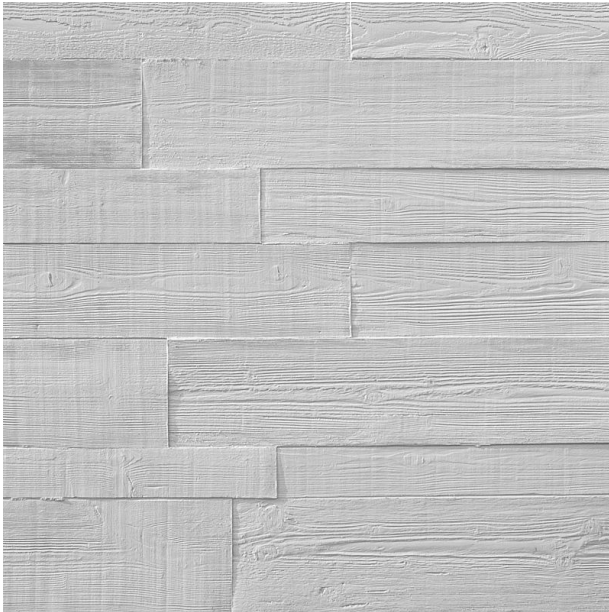
### DIMENSIONS

Uses	Dimensions (mm)	Order Number
100	▲ 7250 × ▶ 3800	C 2032
50	▲ 6000 × ▶ 1000	F 2032
10	▲ 6000 × ▶ 1000	T 2032

100-timer formliners are supplied in an individual dimension within the maximum indicated dimensions.

The specified widths of the 10-timer and 50-timer formliners are a fixed dimension and ensure the continuity of the structure in the case of linear patterns. The longitudinal direction of the pattern is variable and can be ordered from 1 m up to the maximum dimension in 50 cm steps.





## RECKLI 2/163 FRASER

A horizontally running wood pattern with irregularly joining boards. The front- and back-lying elements enliven the façade.

**Dimensions in stock:**

- ▲5922 x ►3186 1 piece (C45)
- ▲3400 x ►9650 1 piece (C46)

### DIMENSIONS



Series	Uses	Dimensions (mm)	Order Number
C	100	▲ 992 <sup>flex</sup> x ► 9650 <sup>flex</sup>	C 2163
A	50	▲ 992 <sup>fix</sup> x ► 9650 <sup>flex</sup>	A 2163
E	10	-	

#### flex

Formliners labeled as Flex specify the maximal dimensions that they are available in. Any dimension below this value can be chosen freely.

#### fix

The formliners labeled as Fix can only be delivered in the specified dimension.

#### uses

We guarantee 100 uses for molds of series C, 50 uses of series A, 10 uses of series E.



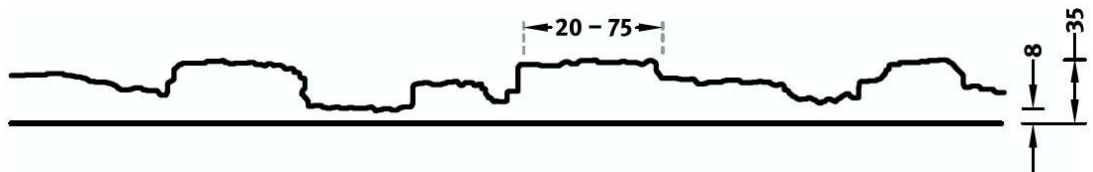
## RECKLI 2/168 SOMME

A vertically running wood pattern. The uneven surface of the sticks is reminiscent of broken and splintered wooden beams.

### Dimensions in stock:

- ▲ 5000 x ▶ 3360    2 pieces (C4 + C5)
- ▲ 7000 x ▶ 3340    1 Piece (C6)
- ▲ 3400 x ▶ 3400    1 Piece (C11)
- ▲ 7900 x ▶ 3400    1 Piece (C48)

### DIMENSIONS



Series	Uses	Dimensions (mm)	Order Number
C	100	▲ 7900 <sup>flex</sup> x ▶ 1270 <sup>flex</sup>	C 2168
A	50	▲ 7900 <sup>flex</sup> x ▶ 1270 <sup>fix</sup>	A 2168
E	10	▲ 7900 <sup>flex</sup> x ▶ 1270 <sup>fix</sup>	E 2168

#### flex

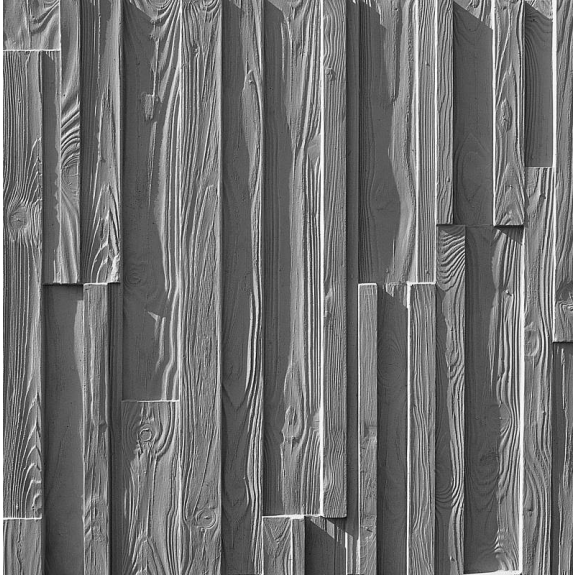
Formliners labeled as Flex specify the maximal dimensions that they are available in. Any dimension below this value can be chosen freely.

#### fix

The formliners labeled as Fix can only be delivered in the specified dimension.

#### uses

We guarantee 100 uses for molds of series C, 50 uses of series A, 10 uses of series E.



## 1/317 RUSTIC

A wood pattern with long and short boards. The deep grain lends a rustic-natural and wild look to the façade.

Not in stock

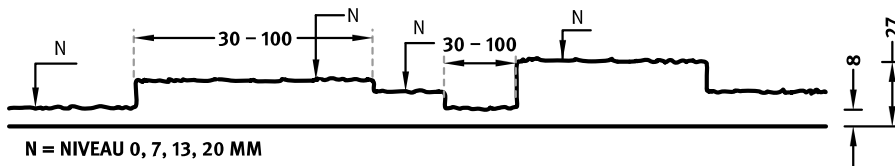
### DIMENSIONS

Uses	Dimensions (mm)	Order Number
100	-	-
50	▲ 6000 × ► 1000	F 1317
10	▲ 6000 × ► 1000	T 1317

\* visible joint at 3m

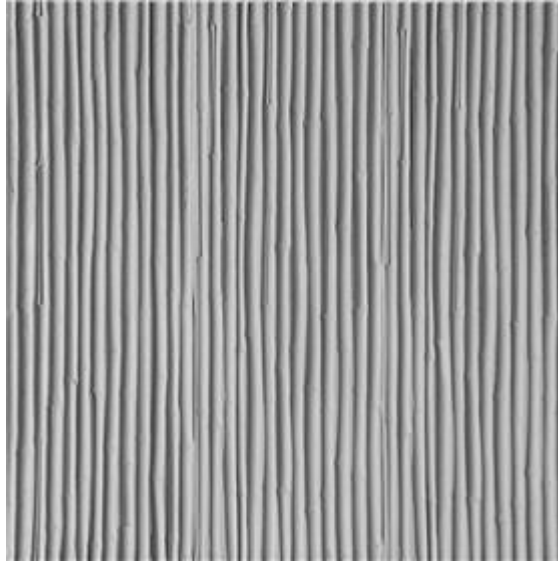
100-timer formliners are supplied in an individual dimension within the maximum indicated dimensions.

The specified widths of the 10-timer and 50-timer formliners are a fixed dimension and ensure the continuity of the structure in the case of linear patterns. The longitudinal direction of the pattern is variable and can be ordered from 1 m up to the maximum dimension in 50 cm steps.





# ≡ 560800 "Bambus"



## 560800 Bambus

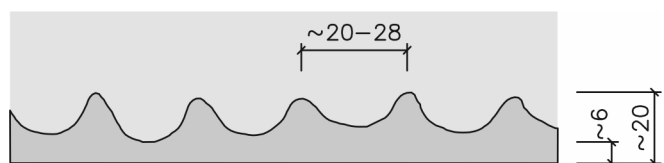
Dimensions in stock:  
 ▲4240 x ►3400 2 pieces (C26 + C27)

### Matafmetingen

A	mm	1000			
B	mm	6000			
Matdikte	mm	~ 20,00			

### Maattoleranties

A/B	%	± 1,00
Matdikte	mm	± 2,00
Gewicht	kg/m <sup>2</sup>	~ 13,50
Shore hardheid A		65-70
Bestand tegen temperatuur	°C	+ 80,00



# Ribs and waves



# **RIBS AND WAVES**

## **2/29 FULDA**

### **P19.105 Sampaix Bagnolet**

Rue Daumier 8, FR- 93170 Bagnolet



### **P20.042 Arhipel**

Rue Etienne Dolet 139, 94140 Alforville

### **P20.126 Cocoon**

Rue du Toulon 3, 94140 Alforville



### **P21.172 Pleegzorg – Vandersmissen NV**

Brusselsesteenweg 9 , 3000 Leuven

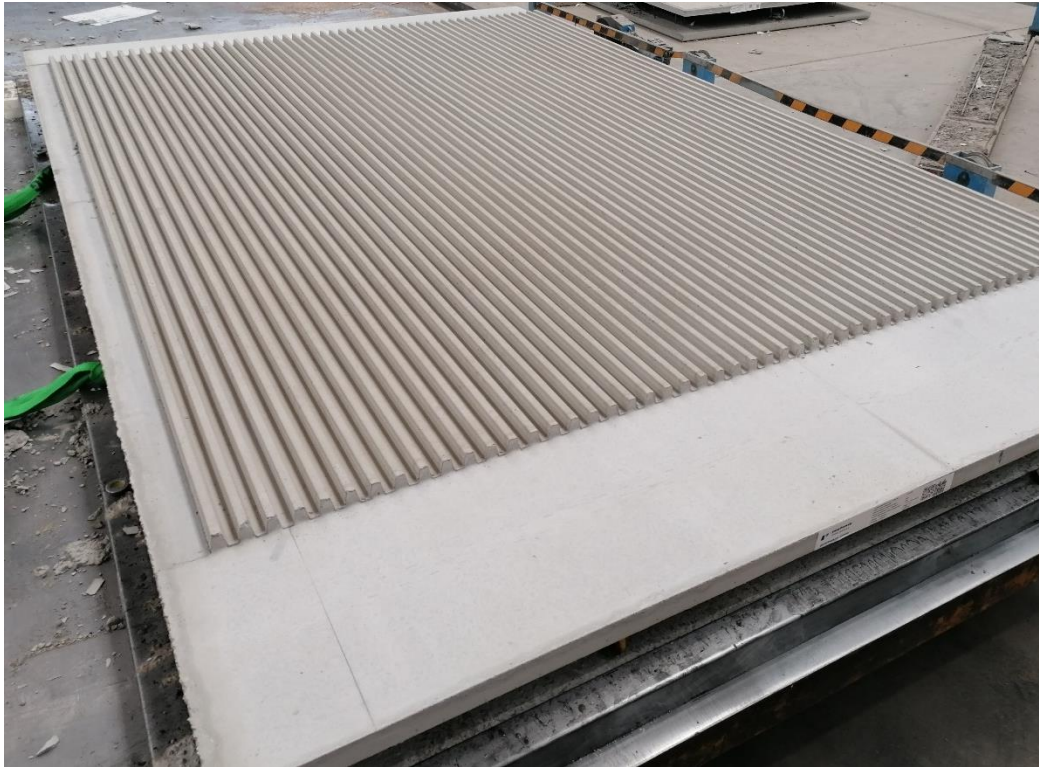
### **P23.001 Brossolette**

Rue Pierre Brossolette 97C, FR-59820 Gravelines

## **2/36 Rib Type H**

**P24.055** 97 Logements - Cergy

Avenue de Béguines 2, FR-95800 Cergy



## **2/77 Tigris**

**P20.169** Rouget de Isle Fort

Avenue Rouget de L'isle 56 (54 D5), FR- 94400 Vitry sur Seine



## 2/175 FRIESLAND

**P16.015** Centre Administratif et de Consultation

Route de Béthune 174, FR-62160 Aix Noulette



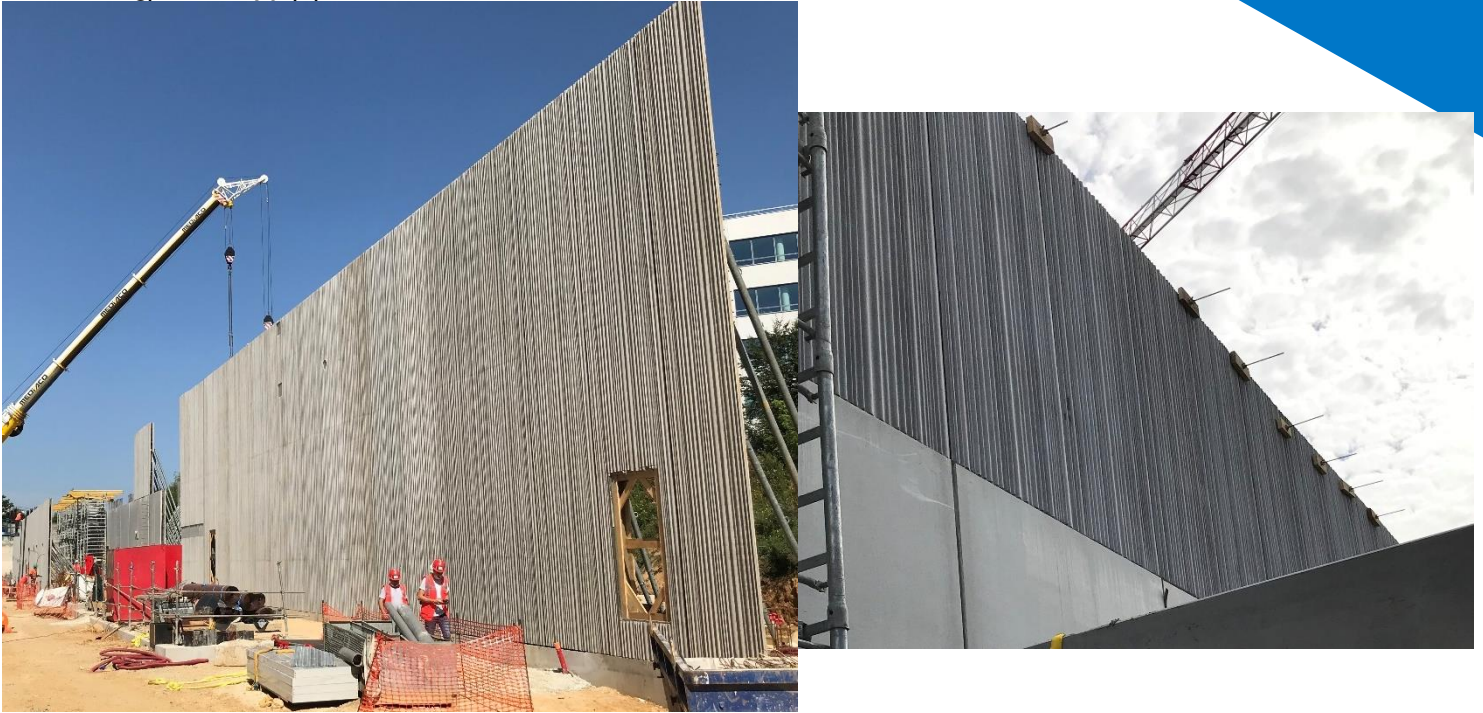
**P19.126** Colman – Woning Dejonghe

Eeklostraat 35, 8030 Gent (Mariakerke)



**P21.086 SMR T10 Chatenay Malabry**

Avenue Paul Langevin/Chemin du Petit Bicetre- Dptale (D2), FR-92290



**P21.112 Prison de Ittre - Tradeco**

Rue Clabecq 100, 1460 Ittre

**P23.063 Logements Orly**

Avenue des Martyrs de Chateaubriant, FR-94390 Orly

**P23.071 Hébergements Medico Sociaux**

Rue d'Aire 1/L'Abbaye de Saint-André, FR-62900 Witternesse

**2/106 B AMUR**

**P15.008 Precast concrete structures, HMP North Wales**

HMP North Wales, Bridge Road, Wrexham



**1/172 Sinus 27/100**

**P21.170 Politiegebouw AMOW – Vandenbussche - Asse**

Asphalcosite 20, 1730 Asse



**1/173 THUR**

**P17.129 Edelis**

Avenue de la République, Rue Réaumur, FR-59700 Marcq En Baroeul



**P17.218 Le Jouvence**

Rue Schulmeister / Avenue de Normandie, FR-67100 Strasbourg





**563400 BRUSSEL**

**P19.049** Blum Partenord Villeneuve D'asq

Rue Baudouin 38, FR-59491 Villeneuve D'asq



**P20.078** Parc du Verseau

Avenue de la Marne 29, FR-59292 Wasquehal



**P23.165** DLS Construction - Enghien

Rue Brigade Piron, 7850 Petit-Enghien

## 2/150 B VOSGES

P18.161 Bizet Berlioz SOISSONS

Olivier Messiaen, FR-2200 Soissons



## 2/197 Holledau

P20.115 Gaetan lamy

Rue Gaëtan Lamy 52, FR-93308 Aubervilliers

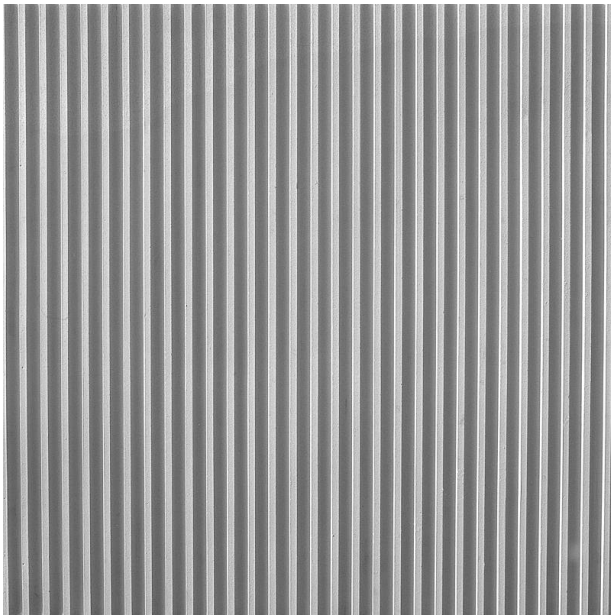


**565000 BASEL**

**P13.067** Gymnase du Courtalin

FR-77700 Magny-Le-Hongre





## RECKLI 2/29 FULDA

Vertically aligned u-shaped elevations with a smooth surface and a diameter of 22 millimeters.

### Dimensions in stock:

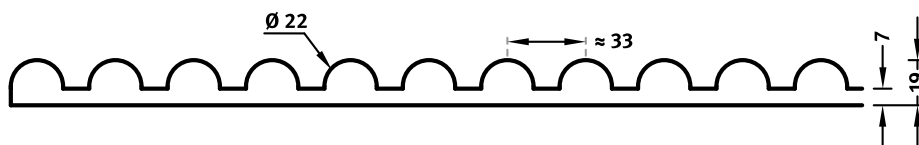
- ▲ 2100 x ► 2750    2 pieces (C15 + C16)
- ▲ 5100 x ► 3000    2 pieces (C13 + C14)

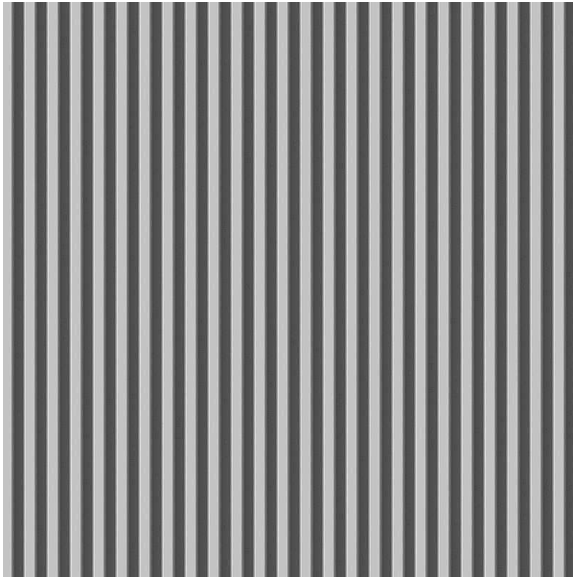
### DIMENSIONS

Uses	Dimensions (mm)	Order Number
100	▲ 6000 x ► 3000	C 2029
50	▲ 6000 x ► 1000	F 2029
10	▲ 6000 x ► 1000	T 2029

100-timer formliners are supplied in an individual dimension within the maximum indicated dimensions.

The specified widths of the 10-timer and 50-timer formliners are a fixed dimension and ensure the continuity of the structure in the case of linear patterns. The longitudinal direction of the pattern is variable and can be ordered from 1 m up to the maximum dimension in 50 cm steps.





## 1/36 RIB TYPE H

A clear and smooth rib pattern with vertically aligned ribs, separated by 15-millimeter wide joints.

### Dimensions in stock:

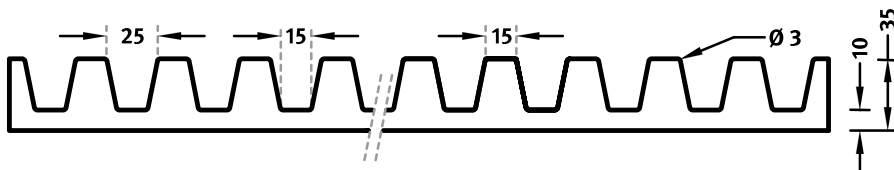
▲4000 x ▶3000 1 Piece (C50)

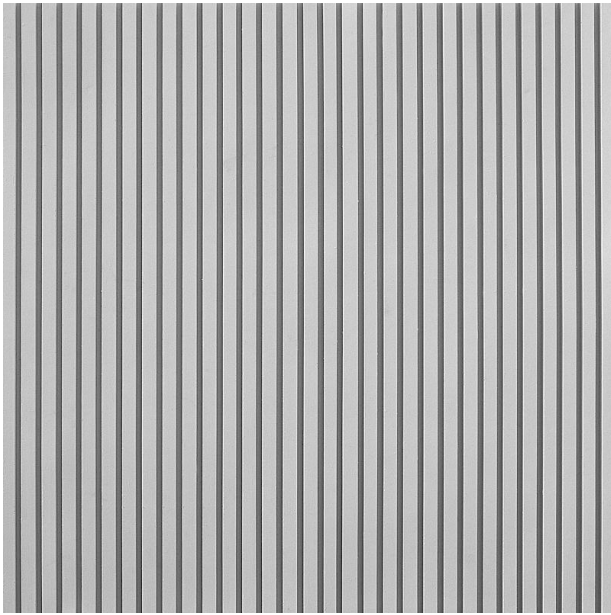
### DIMENSIONS

Uses	Dimensions (mm)	Order Number
100	-	-
50	▲ 5000 × ▶ 1000	F 1036
10	▲ 5000 × ▶ 1000	T 1036

100-timer formliners are supplied in an individual dimension within the maximum indicated dimensions.

The specified widths of the 10-timer and 50-timer formliners are a fixed dimension and ensure the continuity of the structure in the case of linear patterns. The longitudinal direction of the pattern is variable and can be ordered from 1 m up to the maximum dimension in 10 cm steps.





## 2/77 TIGRIS

A clear and smooth rib pattern with vertically aligned ribs, separated by 9-millimeter wide joints.

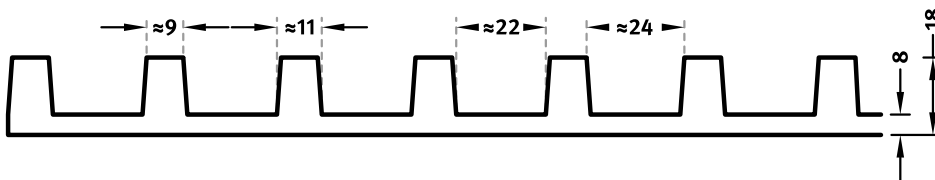
Dimensions in stock:  
 ▲3600 x ►3400 1 piece (C25)

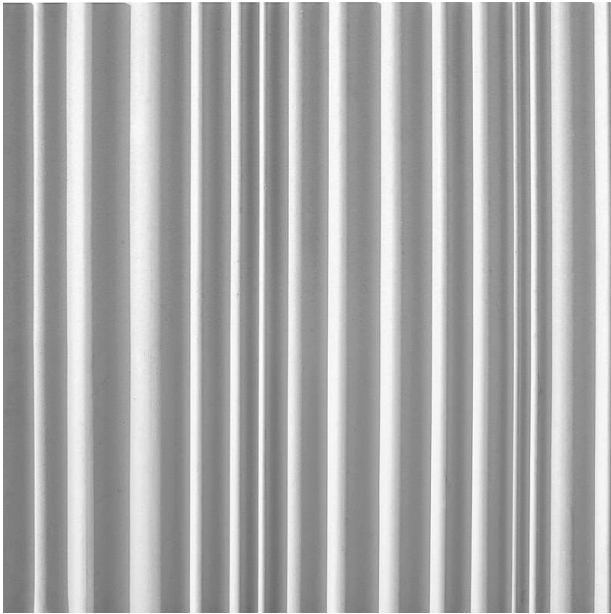
### DIMENSIONS

Uses	Dimensions (mm)	Order Number
100	▲ 6000 × ► 3000	C 2077
50	▲ 6000 × ► 1000	F 2077
10	-	-

100-timer formliners are supplied in an individual dimension within the maximum indicated dimensions.

The specified widths of the 10-timer and 50-timer formliners are a fixed dimension and ensure the continuity of the structure in the case of linear patterns. The longitudinal direction of the pattern is variable and can be ordered from 1 m up to the maximum dimension in 50 cm steps.





## RECKLI 2/175 FRIESLAND

A rib pattern with a ribbed steel roof look, which is enlivened by the interplay of light and shadows. The distance between the elevations lies between 30 and 105 millimeters.

### Dimensions in stock:

▲ 9415 x ▶ 2x 1670 2 mats on 1 table	1 piece (C28)
▲ 3340 x ▶ 5010	1 piece (C29)
▲ 6490 x ▶ 2x 1670 2 mats on 1 table	1 piece (C30)
▲ 9650 x ▶ 3360 2 mats on 1 table with joint of 2cm in between	1 piece (C31)
▲ 8790 x ▶ 2x 1670 2 mats on 1 table	1 piece (C32)

### DIMENSIONS

Series	Uses	Dimensions (mm)	Order Number
C	100	▲ 6000 <sup>flex</sup> x ▶ 1670 <sup>flex</sup>	C 2175
A	50	▲ 6000 <sup>flex</sup> x ▶ 1205 <sup>fix</sup>	A 2175
E	10	▲ 6000 <sup>flex</sup> x ▶ 1205 <sup>fix</sup>	E 2175

#### flex

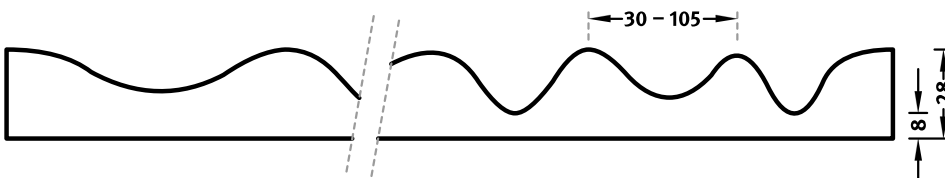
Formliners labeled as Flex specify the maximal dimensions that they are available in. Any dimension below this value can be chosen freely.

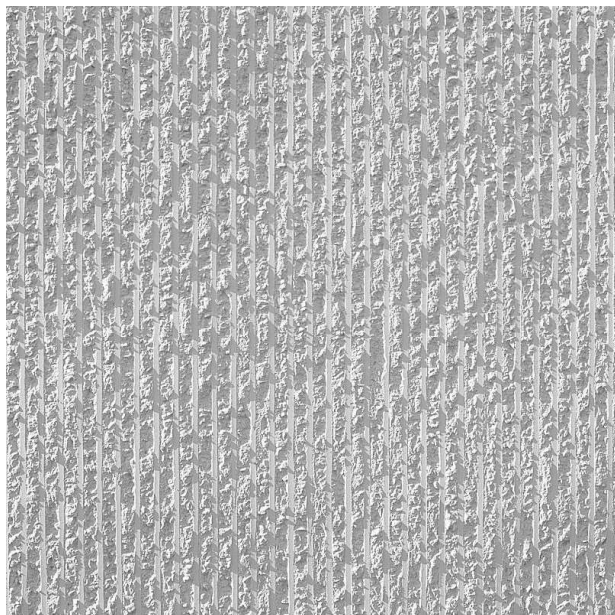
#### fix

The formliners labeled as Fix can only be delivered in the specified dimension.

#### uses

We guarantee 100 uses for molds of series C, 50 uses of series A, 10 uses of series E.





## RECKLI 2/106 B AMUR

Ribs with a coarsely fractured pattern, separated by smooth elevations with a width of 10 millimeters.

### Dimensions in stock:

▲ 2700 x ▶ 5600 ( ▲2700 x ▶2800)	1 piece 2 pieces
▲ 2700 x ▶ 6270 ( ▲2700 x ▶3270) ( ▲2700 x ▶3000)	1 piece 1 pieces 1 pieces

### DIMENSIONS

Series	Uses	Dimensions (mm)	Order Number
C	100	▲ 6900 <sup>flex</sup> x ▶ 3800 <sup>flex</sup>	C 2106
A	50	▲ 6900 <sup>flex</sup> x ▶ 1250 <sup>flex</sup>	A 2106
A	50	▲ 1250 <sup>flex</sup> x ▶ 3800 <sup>flex</sup>	A 2106
E	10	-	

#### flex

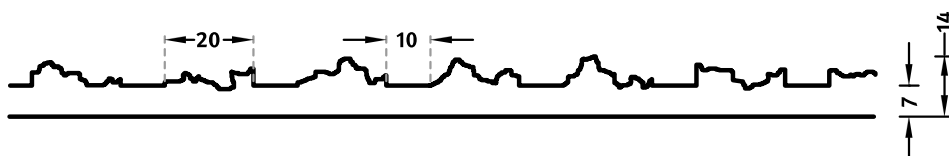
Formliners labeled as Flex specify the maximal dimensions that they are available in. Any dimension below this value can be chosen freely.

#### fix

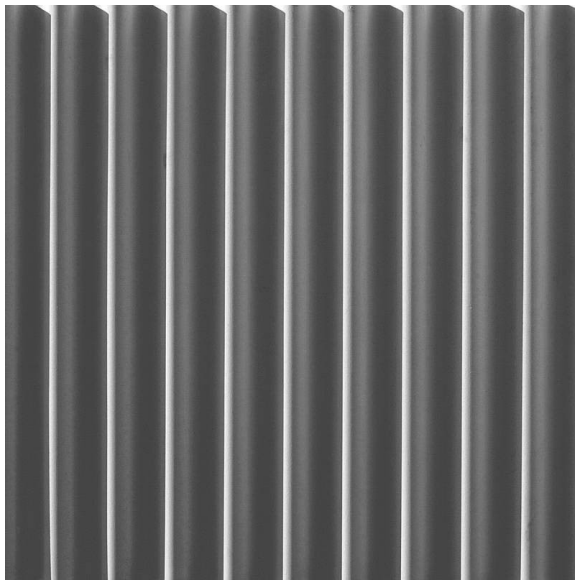
The formliners labeled as Fix can only be delivered in the specified dimension.

#### uses

We guarantee 100 uses for molds of series C, 50 uses of series A, 10 uses of series E.







## 1/172 SINUS 27/100

A wave pattern with a ribbed steel roof look, which is enlivened by the interplay of light and shadows. The distance between the elevations is 100 millimeters.

Dimensions in stock:

▲ 5523 x ► 3400 2 pieces (C37 + C38)

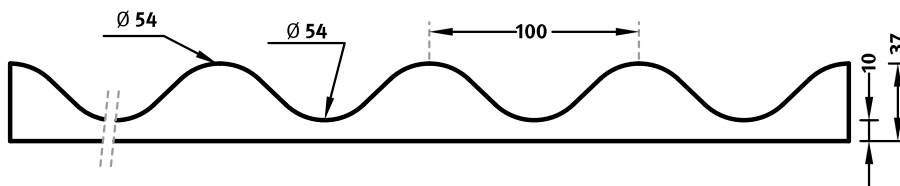
See details for joints

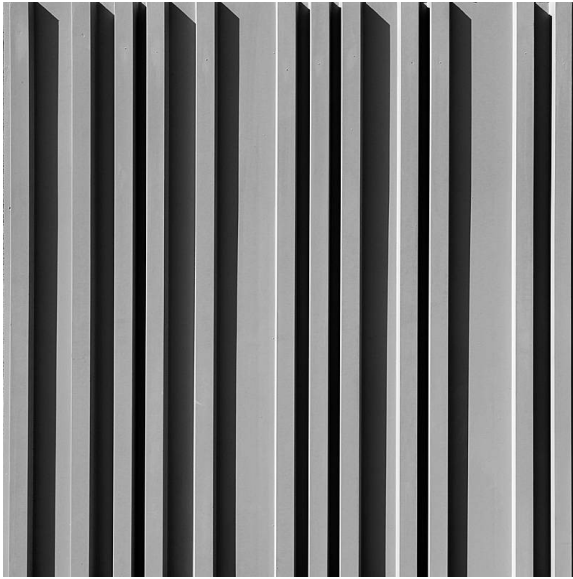
### DIMENSIONS

Uses	Dimensions (mm)	Order Number
100	-	-
50	▲ 5000 × ► 1000	F 1172
10	▲ 5000 × ► 1000	T 1172

100-timer formliners are supplied in an individual dimension within the maximum indicated dimensions.

The specified widths of the 10-timer and 50-timer formliners are a fixed dimension and ensure the continuity of the structure in the case of linear patterns. The longitudinal direction of the pattern is variable and can be ordered from 1 m up to the maximum dimension in 50 cm steps.





## 1/173 THUR

A clear and smooth rib pattern with vertically aligned ribs of varying width and arrangement, separated by 14 to 102-millimeter wide joints.

### Dimensions in stock:

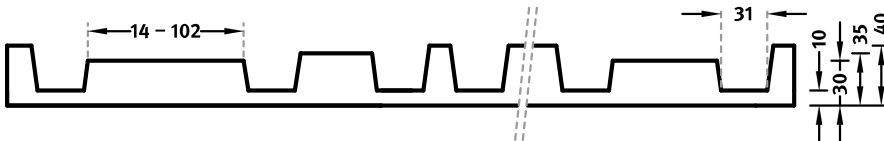
▲ 2680 x ▶ 4000 (▲2680 x ▶2000)	1 pieces (C1 + C2) 2 pieces
▲ 3005 x ▶ 6030 (▲3005 x ▶1005)	1 pieces 6 pieces

### DIMENSIONS

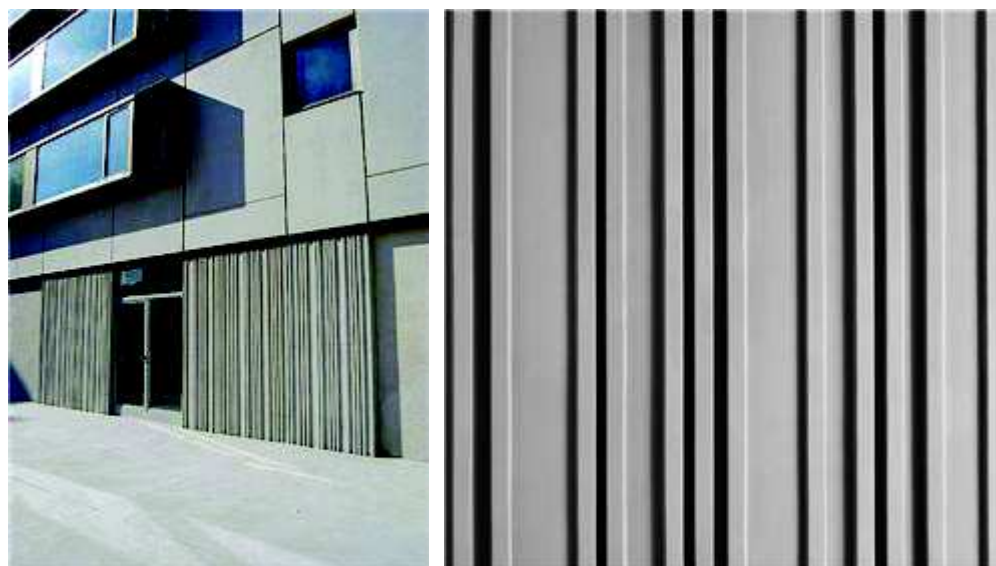
Uses	Dimensions (mm)	Order Number
100	-	-
50	▲ 5000 × ▶ 1000	F 1173
10	▲ 5000 × ▶ 1000	T 1173

100-timer formliners are supplied in an individual dimension within the maximum indicated dimensions.

The specified widths of the 10-timer and 50-timer formliners are a fixed dimension and ensure the continuity of the structure in the case of linear patterns. The longitudinal direction of the pattern is variable and can be ordered from 1 m up to the maximum dimension in 50 cm steps.



# 563400 "Brüssel"



## 563400 Brüssel

Dimensions in stock:

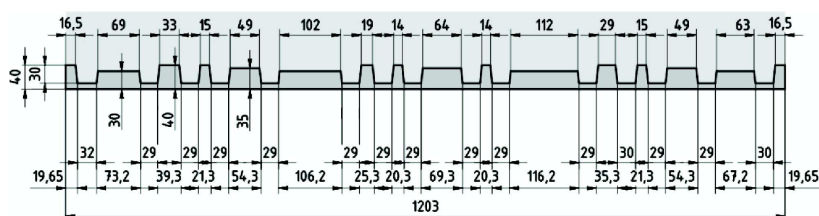
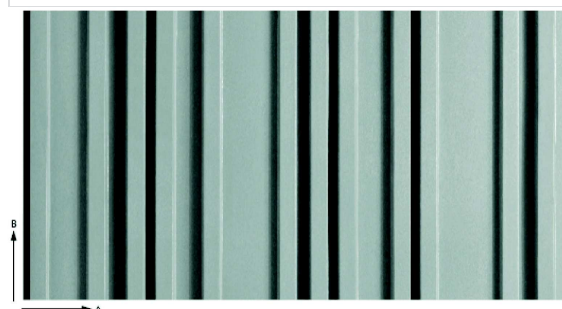
▲3400 x ►10400 1 piece (C8)

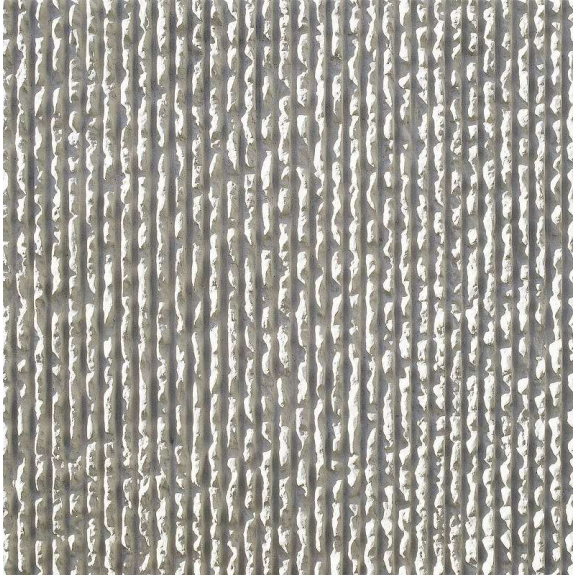
## Maafmetingen

A	mm	1200			
B	mm	4000			
Matdikte	mm		~ 40,00		

## Maattoleranties

A/B	%	± 1,00
Matdikte	mm	± 2,00
Gewicht	kg/m <sup>2</sup>	~ 27,00
Shore hardheid A		65-70
Bestand tegen temperatuur	°C	+ 80,00





## 2/150 B VOSGES

Vertically running elevations with a smooth fractured pattern and a diameter of 10 millimeters.

Dimensions in stock:

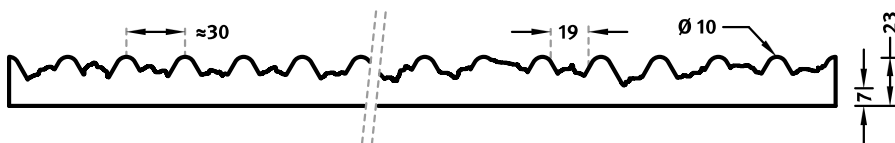
▲ 6000 x ► 3400 1 piece (C7)

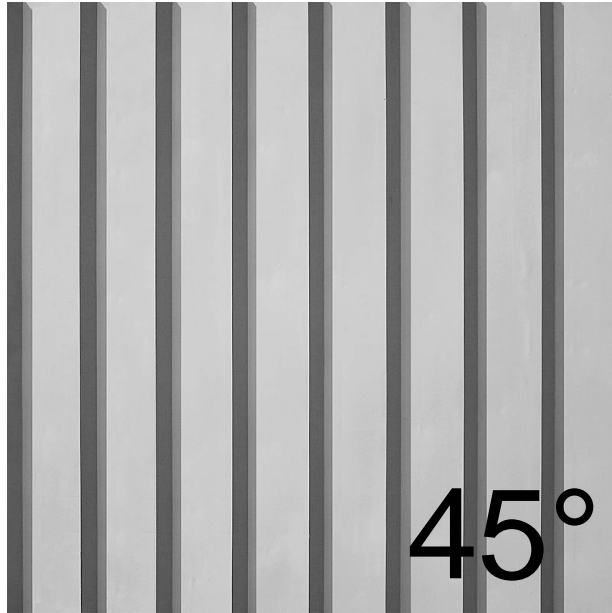
### DIMENSIONS

Uses	Dimensions (mm)	Order Number
100	▲ 6000 x ► 1000	C 2150
50	▲ 6000 x ► 1000	F 2150
10	▲ 6000 x ► 1000	T 2150

100-timer formliners are supplied in an individual dimension within the maximum indicated dimensions.

The specified widths of the 10-timer and 50-timer formliners are a fixed dimension and ensure the continuity of the structure in the case of linear patterns. The longitudinal direction of the pattern is variable and can be ordered from 1 m up to the maximum dimension in 50 cm steps.





## 2/197 HOLLEDAU

A rib pattern with smooth, vertically running elevations. As the highest point does not lie in the middle of the rib, as a type of fin-look is created.

Dimensions in stock: (diagonal, 45°)

See detailed plan for layout

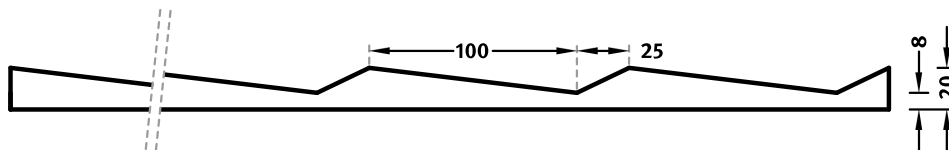
2800 x 2700	1 piece (C21)
5550 x 2800	1 piece (C22)
3850 x 2700	1 piece (C23)
5500 x 2800	1 piece (C24)

### DIMENSIONS

Uses	Dimensions (mm)	Order Number
100	▲ 6000 × ► 1000	C 2197
50	▲ 6000 × ► 1000	F 2197
10	▲ 6000 × ► 1000	T 2197

100-timer formliners are supplied in an individual dimension within the maximum indicated dimensions.

The specified widths of the 10-timer and 50-timer formliners are a fixed dimension and ensure the continuity of the structure in the case of linear patterns. The longitudinal direction of the pattern is variable and can be ordered from 1 m up to the maximum dimension in 50 cm steps.



# ≡ 565000 "Basel"



## 565000 Basel

### Matafmetingen

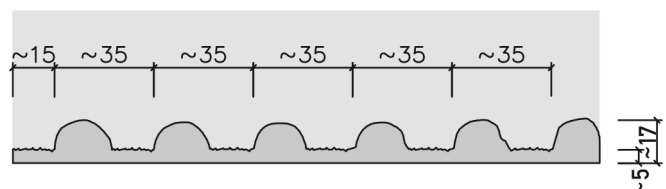
#### Dimensions in stock:

▲3350 x ►9990 (▲3350 x ►1110)	1 piece 9 pieces
▲3350 x ►1830 (▲3350 x ►1110) (▲3350 x ►720)	1 piece 1 piece 1 pieces

A	mm	1500	6000	2915	
B	mm	5200	3000	10000	
Matdikte	mm	~ 17,00			

### Maattoleranties

A/B	%	± 1,00
Matdikte	mm	± 2,00
Gewicht	kg/m <sup>2</sup>	~ 20,00
Shore hardheid A		65-70
Bestand tegen temperatuur	°C	+ 80,00



# Functional



# FUNCTIONAL

## NONA

P16.148 Willems en Co – HW Mechelen

KC NONA, Begijnestraat 27, 2800 Mechelen



## GROUNDPLAN + LETTERS + HANDRAIL

P17.052 Musee du tank

Rue du Calvaire, FR-59267 Flesquieres





## LETTERS

**P12.256** Galloo

Wervikstraat 320, 8930 Menen

**P16.147** Piscine Estaires

Centre Aquatique, Rue Jacqueminemars, FR-59940 Estaires



**P19.021** Stade Michel Bernard

15 Avenue Léon Blum, FR-59370 Mons en Baroeul



**P21.197 De Brug – Alheembouw - Staden**

Bruggestraat 30, 8840 Staden



**DIGITS**

**P15.059 Logements BBC Lannoy**

Rue Nationale / Rue Vendôme, FR-59390 Lannoy



## FOLIE

**P11.322** Campus Tohannic, Vannes

Rue André Lwoff, FR56000 Vannes



**P13.006** College Le Blanc Mesnil



**P19.072** Ecole Maternelle Annoeullin

..., FR-59112 Annoeullin

**P22.091** Embarcadère

Boulevard du bassin Napoléon 1, FR-62200 Boulogne-Sur-Mer

Wilt u echt álle voordelen van  
**Prefaxis** ontdekken?

Contacteer ons vandaag nog voor  
een uitgebreide kennismaking en  
gedetailleerde uitleg.

T. +32 56 56 55 50  
[info@prefaxis.com](mailto:info@prefaxis.com)

**Prefaxis NV**

Touquetstraat 228 · B-7783 Ploegsteert  
T +32 56 56 55 50 · [info@prefaxis.com](mailto:info@prefaxis.com)  
01/2024

**[prefaxis.com](https://www.prefaxis.com)**